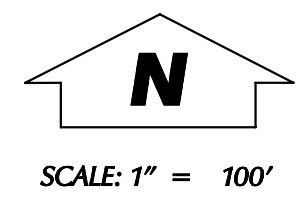
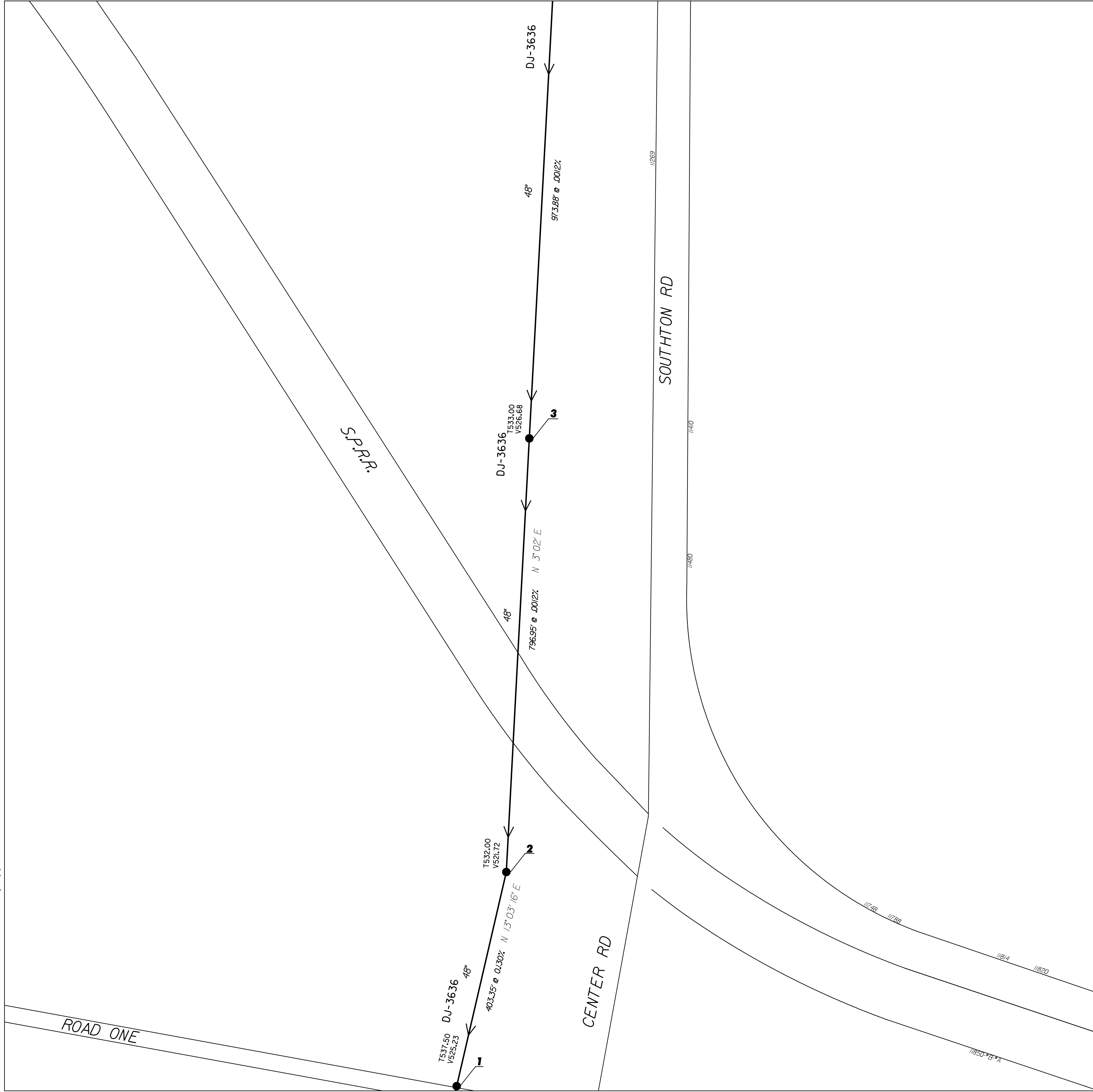


NOTE: Locations of Facilities are only approximate.

534,000
180,000

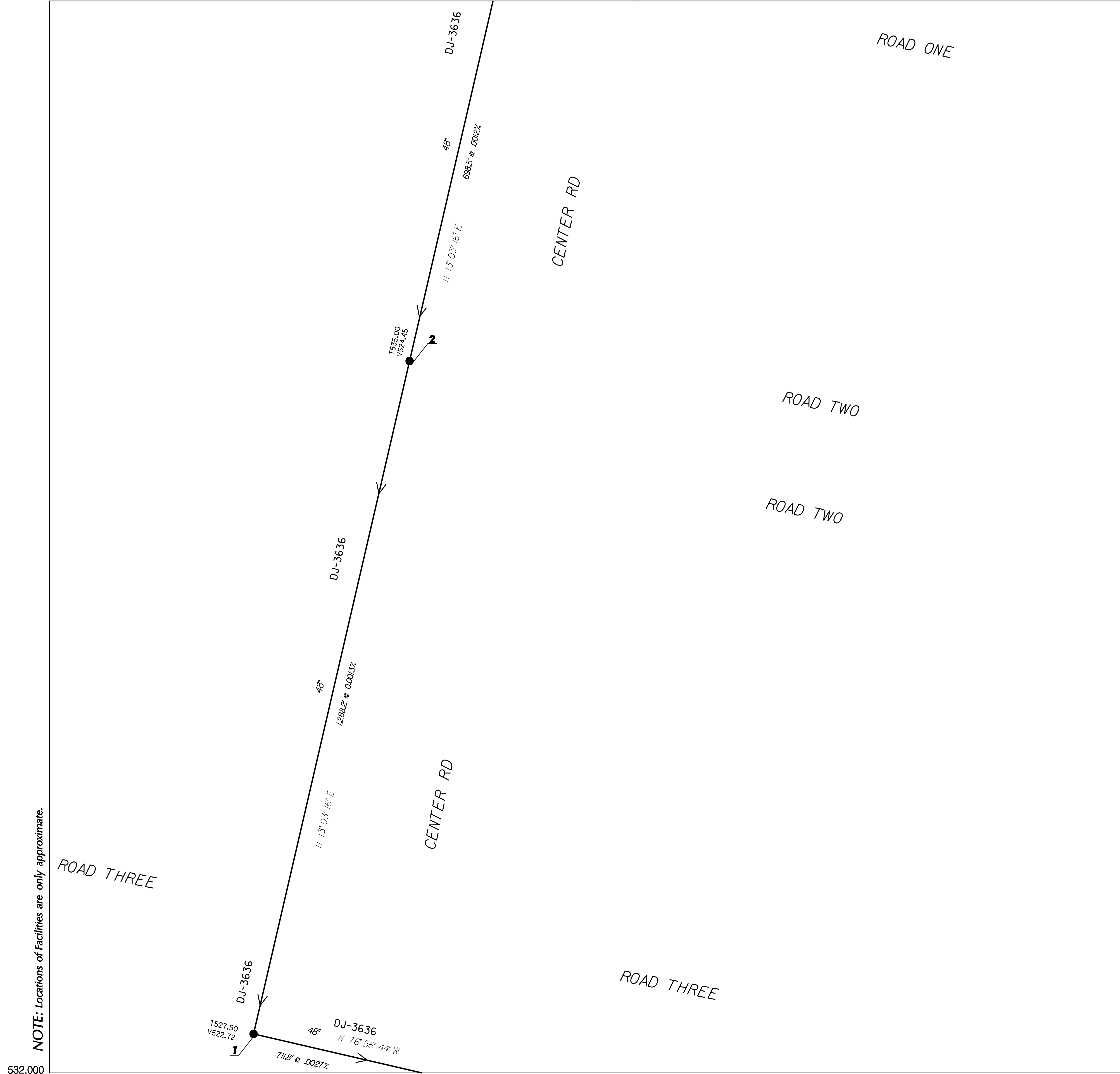


PLOTTED BY: Ernest J. Zavala

SAWS UTILITY MAP DISCLAIMER
 This utility map is for reference only. The information may not represent what actually has been constructed. SAWS explicitly disclaims any representation of the accuracy of the information on this map. SAWS assumes no liability for any errors, omissions, or inaccuracies in the map regardless of how caused. Field verification should be done as necessary.

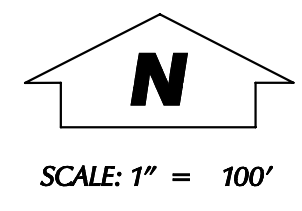
SAN ANTONIO WATER SYSTEM
 INFRASTRUCTURE PLANNING DEPARTMENT
 GIS MAPPING DIVISION
 26 - SEPT - 2005





NOTE: Locations of Facilities are only approximate.

532,000
180,000

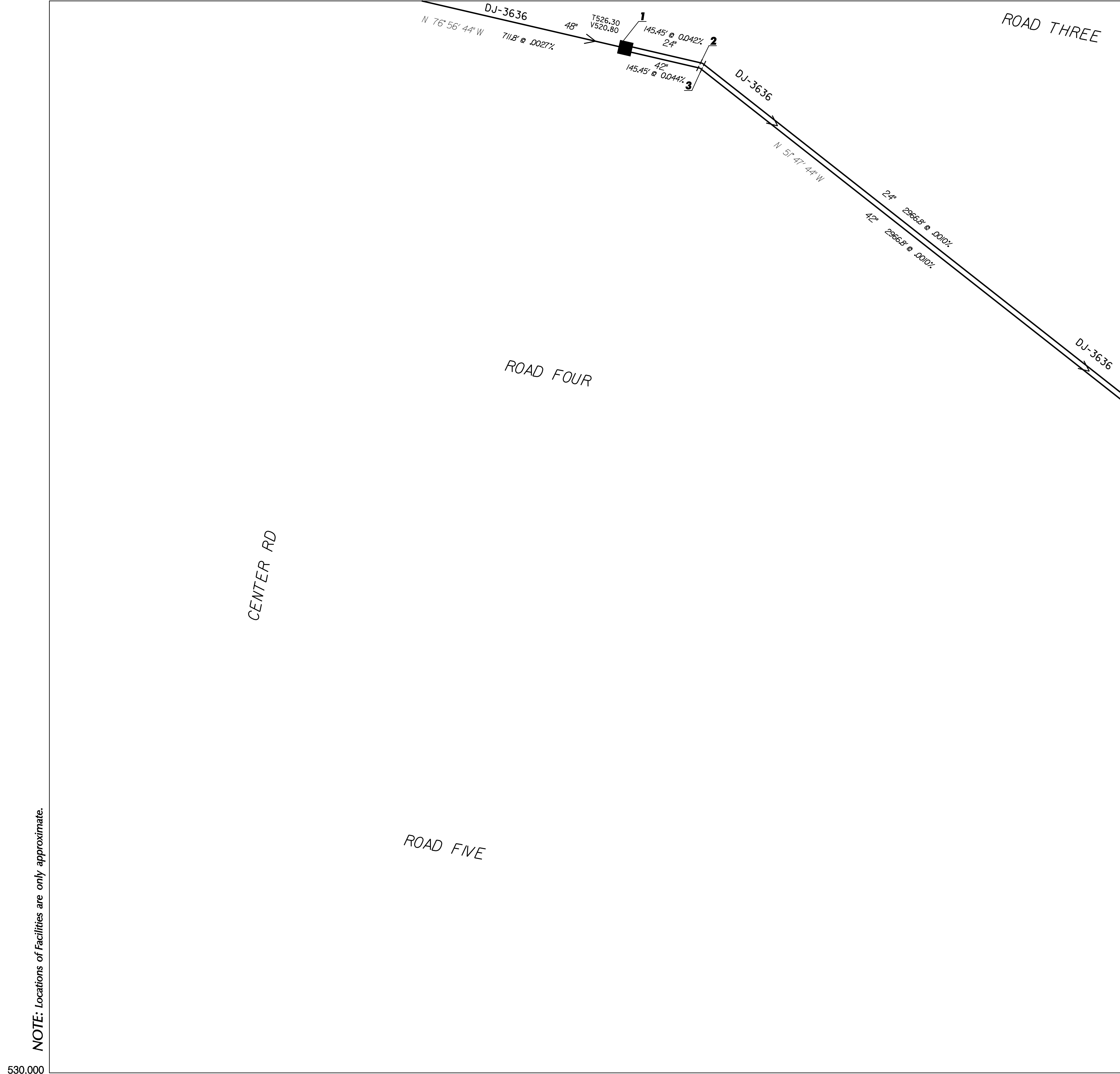


PLOTTED BY: Ernest J. Zavala

SAWS UTILITY MAP DISCLAIMER
 This utility map is for reference only. The information may not represent what actually has been constructed. SAWS explicitly disclaims any representation of the accuracy of the information on this map. SAWS assumes no liability for any errors, omissions, or inaccuracies in the map regardless of how caused. Field verification should be done as necessary.

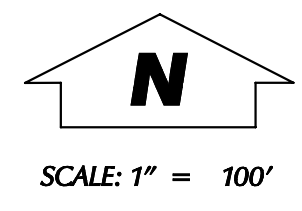
SAN ANTONIO WATER SYSTEM
 INFRASTRUCTURE PLANNING DEPARTMENT
 GIS MAPPING DIVISION
 26 - SEPT - 2005





NOTE: Locations of Facilities are only approximate.

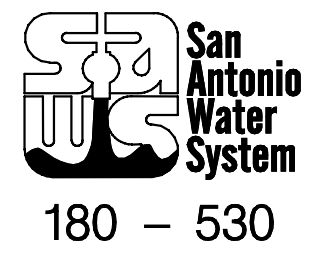
530,000
180,000



PLOTTED BY: Ernest J. Zavala

SAWS UTILITY MAP DISCLAIMER
 This utility map is for reference only. The information may not represent what actually has been constructed. SAWS explicitly disclaims any representation of the accuracy of the information on this map. SAWS assumes no liability for any errors, omissions, or inaccuracies in the map regardless of how caused. Field verification should be done as necessary.

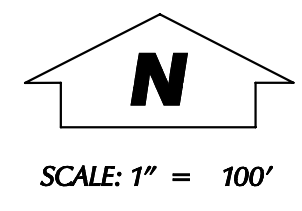
SAN ANTONIO WATER SYSTEM
 INFRASTRUCTURE PLANNING DEPARTMENT
 GIS MAPPING DIVISION
 26 - SEPT - 2005





NOTE: Locations of Facilities are only approximate.

542,000
178,000



PLOTTED BY: Ernest J. Zavala

SAWS UTILITY MAP DISCLAIMER
 This utility map is for reference only. The information may not represent what actually has been constructed. SAWS explicitly disclaims any representation of the accuracy of the information on this map. SAWS assumes no liability for any errors, omissions, or inaccuracies in the map regardless of how caused. Field verification should be done as necessary.

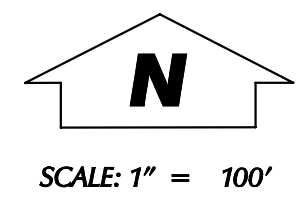
SAN ANTONIO WATER SYSTEM
 INFRASTRUCTURE PLANNING DEPARTMENT
 GIS MAPPING DIVISION
 26 - SEPT - 2005





NOTE: Locations of Facilities are only approximate.

540,000
178,000

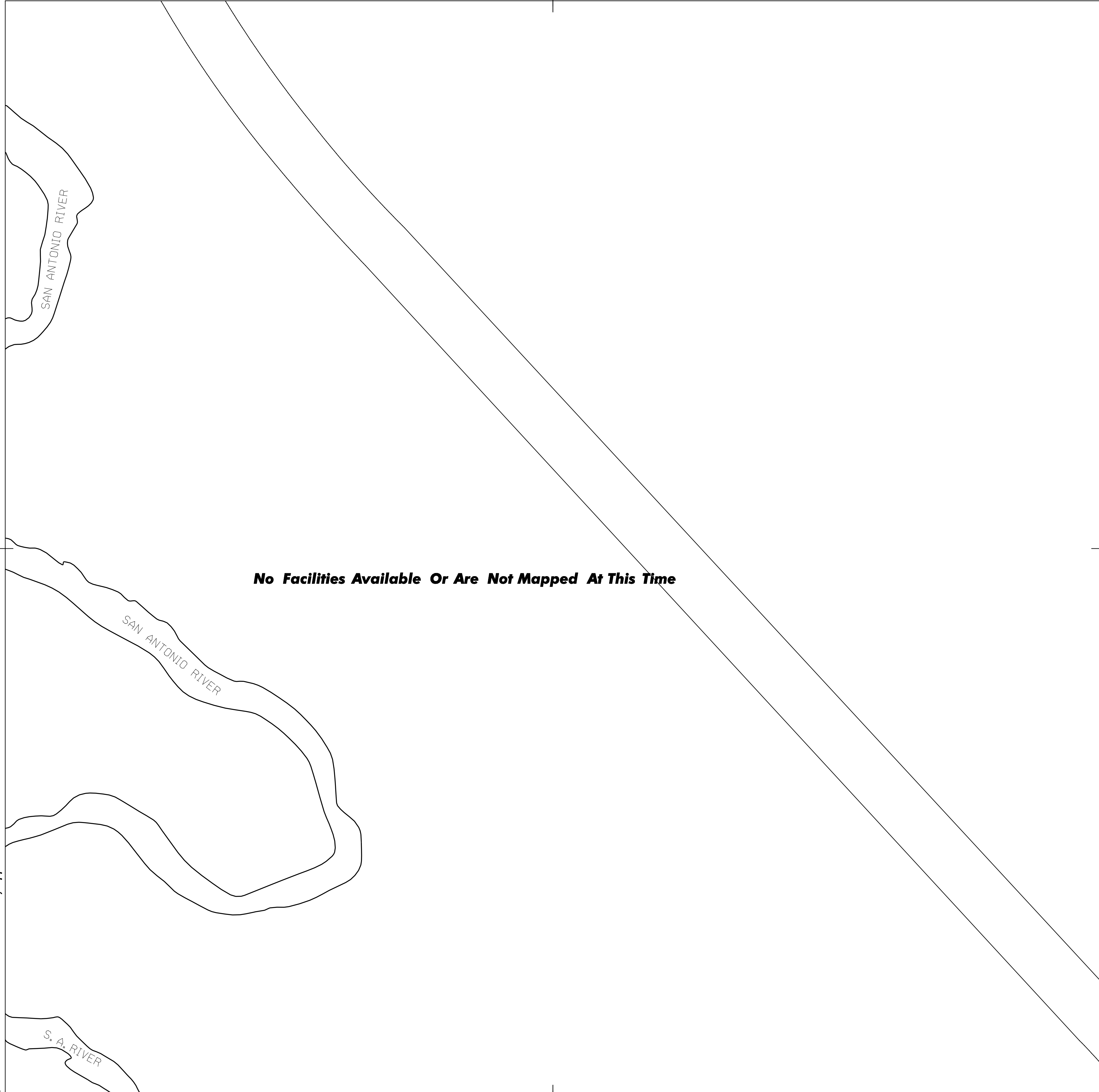


PLOTTED BY: Ernest J. Zavala

S.A.W.S. UTILITY MAP DISCLAIMER
 This utility map is for reference only. The information may not represent what actually has been constructed. S.A.W.S. explicitly disclaims any representation of the accuracy of the information on this map. S.A.W.S. assumes no liability for any errors, omissions, or inaccuracies in the map regardless of how caused. Field verification should be done as necessary. S.A.W.S. prohibits the reproduction or sale of this document. This S.A.W.S. utility map may not under any circumstances, be copied, reproduced, or published in any form or media, or transferred to another without the written permission of the San Antonio Water System (S.A.W.S.)

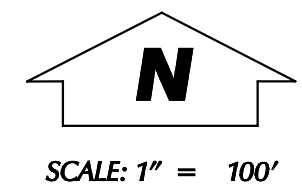
SAN ANTONIO WATER SYSTEM
 INFRASTRUCTURE PLANNING DEPARTMENT
 GIS MAPPING DIVISION
 03 - FEB - 2006





NOTE: Locations of Facilities are only approximate.

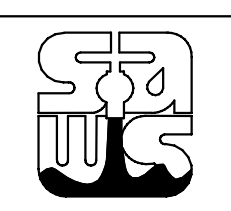
536,000
178,000



SCALE: 1" = 100'

DIGITIZED BY:
PRINTED BY: Ernest J. Zavala

SAN ANTONIO WATER SYSTEM
 INFRASTRUCTURE PLANNING DEPARTMENT
 GIS MAPPING DIVISION
 19 - SEPT - 2003





NOTE: Locations of Facilities are only approximate.

544,000

176,000



SCALE: 1" = 100'

PLOTTED BY: P.D. VASQUEZ

S.A.W.S. UTILITY MAP DISCLAIMER
 This utility map is for reference only. The information may not represent what actually has been constructed. S.A.W.S. explicitly disclaims any representation of the accuracy of the information on this map. S.A.W.S. assumes no liability for any errors, omissions, or inaccuracies in the map regardless of how caused. Field verification should be done as necessary. S.A.W.S. prohibits the reproduction or sale of this document. This S.A.W.S. utility map may not under any circumstances, be copied, reproduced, or published in any form or media, or transferred to another without the written permission of the San Antonio Water System (S.A.W.S.)

SAN ANTONIO WATER SYSTEM
 INFRASTRUCTURE PLANNING DEPARTMENT
 GIS MAPPING DIVISION
 18 JUNE - 2007

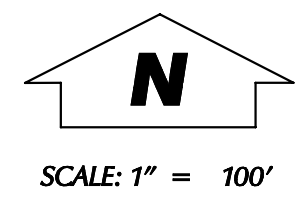


176-544



NOTE: Locations of Facilities are only approximate.

542,000
176,000

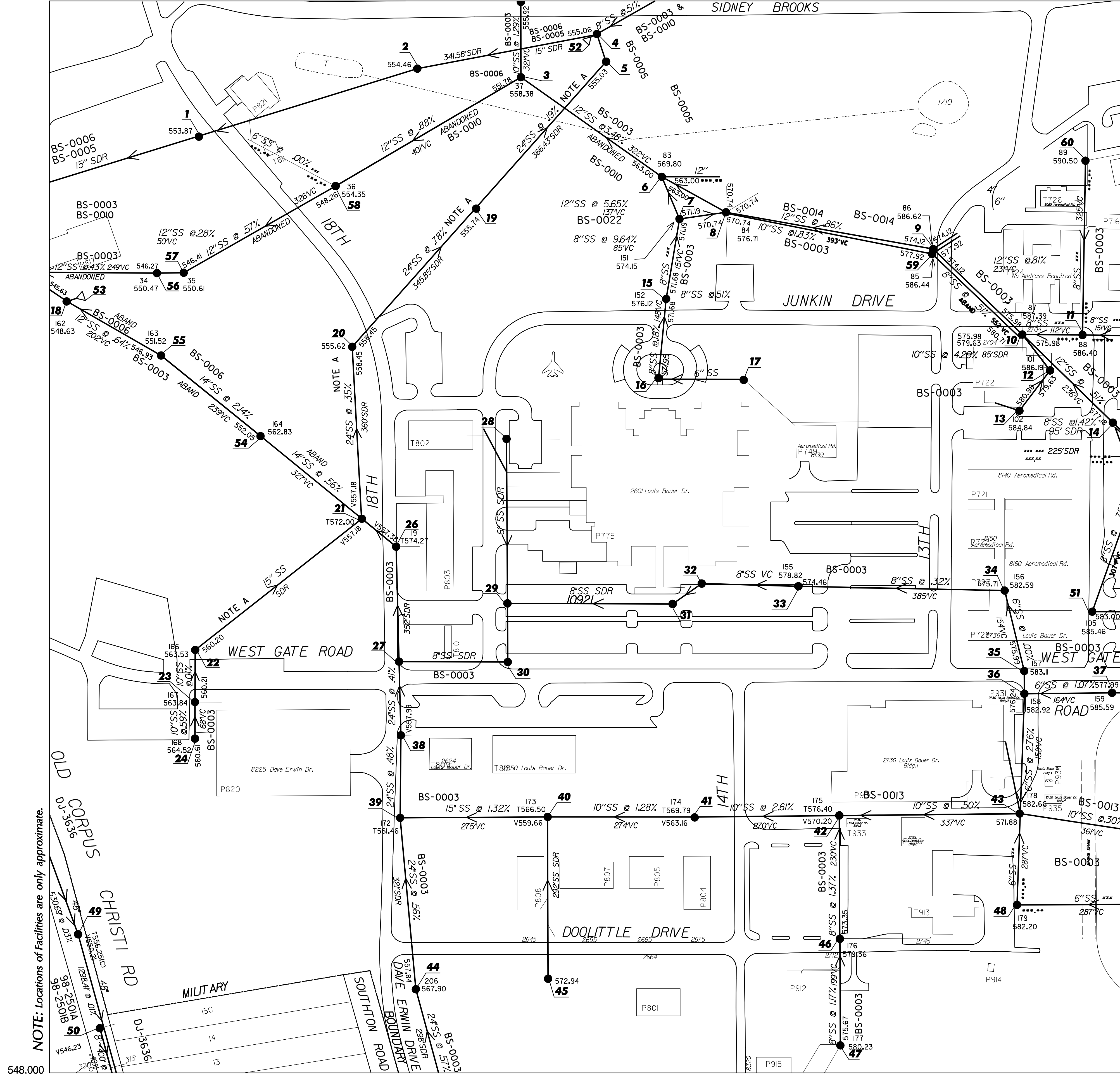


PLOTTED BY: Ernest J. Zavala

SAWS UTILITY MAP DISCLAIMER
 This utility map is for reference only. The information may not represent what actually has been constructed. SAWS explicitly disclaims any representation of the accuracy of the information on this map. SAWS assumes no liability for any errors, omissions, or inaccuracies in the map regardless of how caused. Field verification should be done as necessary.

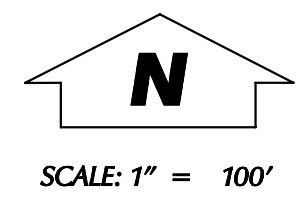
SAN ANTONIO WATER SYSTEM
 INFRASTRUCTURE PLANNING DEPARTMENT
 GIS MAPPING DIVISION
 26 - SEPT - 2005





NOTE: Locations of Facilities are only approximate.

548,000
174,000

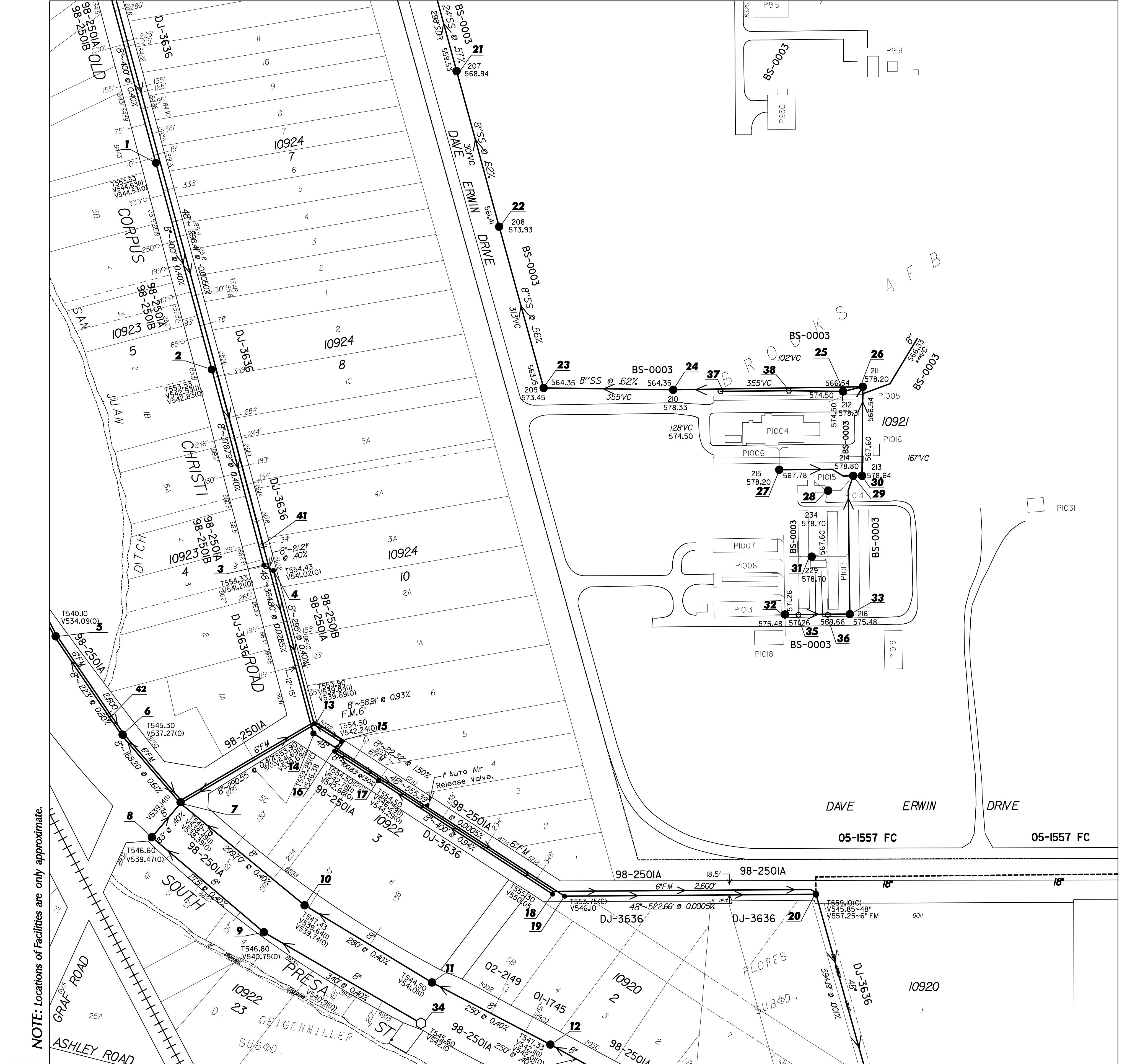


PLOTTED BY: Ernest J. Zavala

SAWS UTILITY MAP DISCLAIMER
 This utility map is for reference only. The information may not represent what actually has been constructed. SAWS explicitly disclaims any representation of the accuracy of the information on this map. SAWS assumes no liability for any errors, omissions, or inaccuracies in the map regardless of how caused. Field verification should be done as necessary.

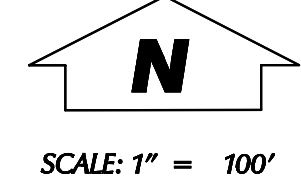
SAN ANTONIO WATER SYSTEM
 INFRASTRUCTURE PLANNING DEPARTMENT
 GIS MAPPING DIVISION
 26 - SEPT - 2005





NOTE: Locations of Facilities are only approximate.

546,000
174,000



PLOTTED BY: C HERNANDEZ

S.A.W.S. UTILITY MAP DISCLAIMER
 This utility map is for reference only. The information may not represent what actually has been constructed. S.A.W.S. explicitly disclaims any representation of the accuracy of the information on this map. S.A.W.S. assumes no liability for any errors, omissions, or inaccuracies in the map regardless of how caused. Field verification should be done as necessary. S.A.W.S. prohibits the reproduction or sale of this document. This S.A.W.S. utility map may not under any circumstances, be copied, reproduced, or published in any form or media, or transferred to another without the written permission of the San Antonio Water System (S.A.W.S.)

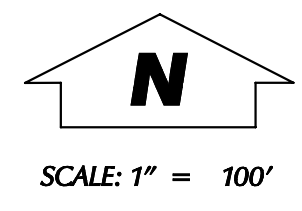
SAN ANTONIO WATER SYSTEM
 INFRASTRUCTURE PLANNING DEPARTMENT
 GIS MAPPING DIVISION
 21 - AUGUST - 2007





NOTE: Locations of Facilities are only approximate.

544,000
174,000



PLOTTED BY: Ernest J. Zavala

SAWS UTILITY MAP DISCLAIMER
 This utility map is for reference only. The information may not represent what actually has been constructed. SAWS explicitly disclaims any representation of the accuracy of the information on this map. SAWS assumes no liability for any errors, omissions, or inaccuracies in the map regardless of how caused. Field verification should be done as necessary.

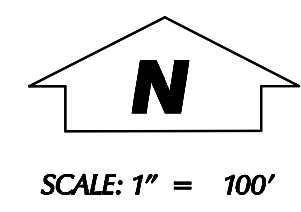
SAN ANTONIO WATER SYSTEM
 INFRASTRUCTURE PLANNING DEPARTMENT
 GIS MAPPING DIVISION
 26 - SEPT - 2005





NOTE: Locations of Facilities are only approximate.

548,000
172,000

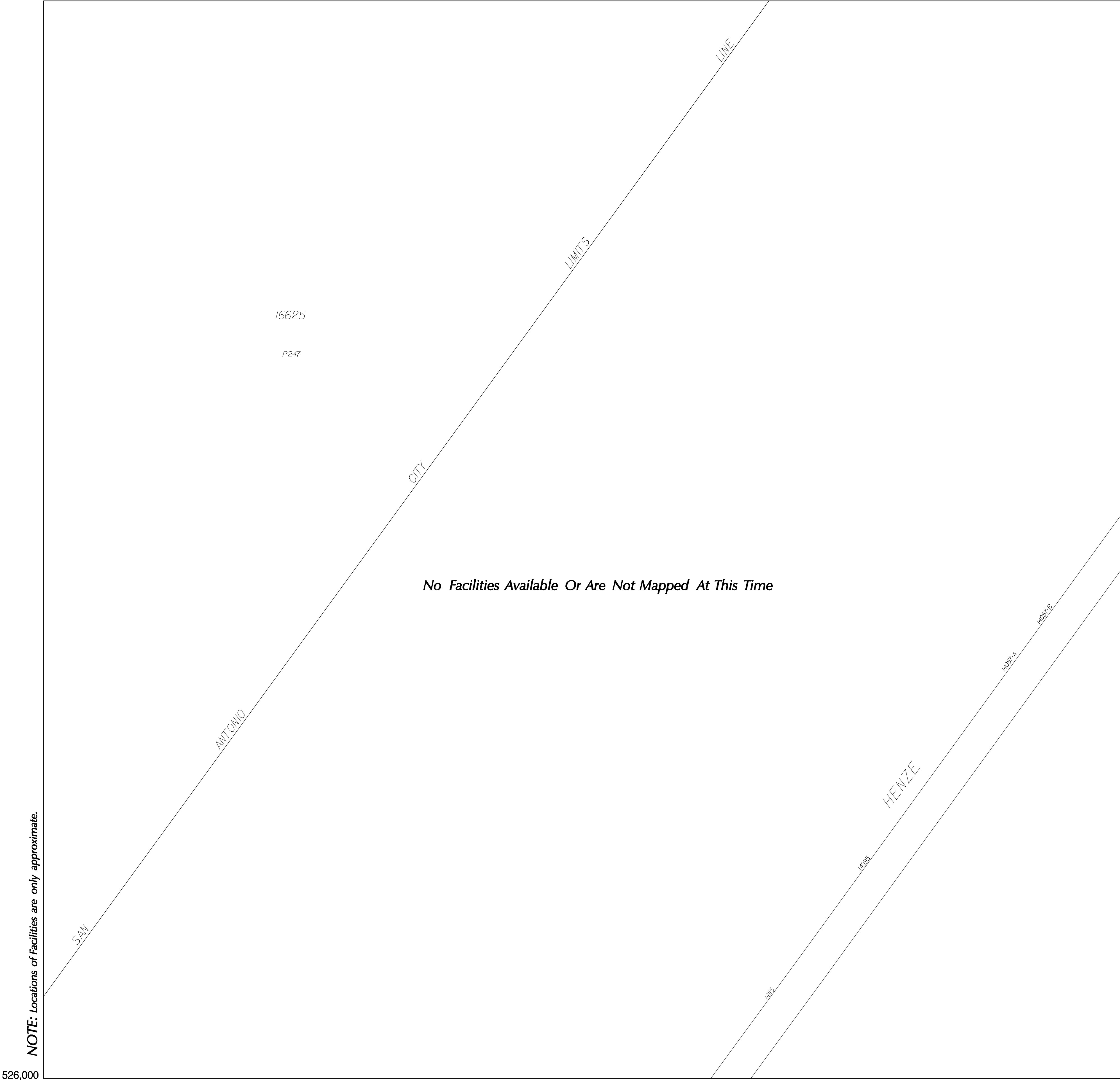


PLOTTED BY: C HERNANDEZ

S.A.W.S. UTILITY MAP DISCLAIMER
 This utility map is for reference only. The information may not represent what actually has been constructed. S.A.W.S. explicitly disclaims any representation of the accuracy of the information on this map. S.A.W.S. assumes no liability for any errors, omissions, or inaccuracies in the map regardless of how caused. Field verification should be done as necessary. S.A.W.S. prohibits the reproduction or sale of this document. This S.A.W.S. utility map may not under any circumstances, be copied, reproduced, or published in any form or media, or transferred to another without the written permission of the San Antonio Water System (S.A.W.S.)

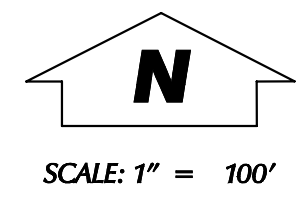
SAN ANTONIO WATER SYSTEM
 INFRASTRUCTURE PLANNING DEPARTMENT
 GIS MAPPING DIVISION
 20 - AUGUST - 2007





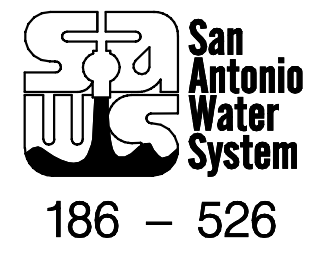
NOTE: Locations of Facilities are only approximate.

526,000
186,000



DIGITIZED BY:
PLOTTED BY: Ernest J. Zavala

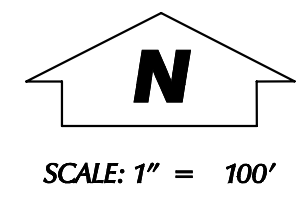
SAN ANTONIO WATER SYSTEM
 INFRASTRUCTURE PLANNING DEPARTMENT
 GIS MAPPING DIVISION
 11 - AUG - 2004





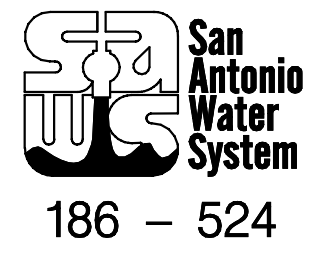
NOTE: Locations of Facilities are only approximate.

524,000
186,000



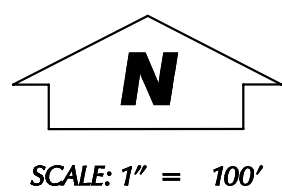
DIGITIZED BY:
PLOTTED BY: Ernest J. Zavala

SAN ANTONIO WATER SYSTEM
 INFRASTRUCTURE PLANNING DEPARTMENT
 GIS MAPPING DIVISION
 11 - AUG - 2004



NOTE: Locations of Facilities are only approximate.

530,000
184,000



SCALE: 1" = 100'

DIGITIZED BY:
PLOTTED BY: Ernest J. Zavala

No Facilities Available Or Are Not Mapped At This Time

16625

P248

P247

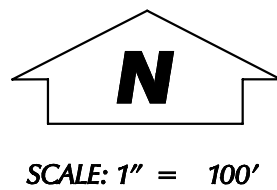
SAN ANTONIO WATER SYSTEM
INFRASTRUCTURE PLANNING DEPARTMENT
GIS MAPPING DIVISION
14 - JUNE - 2004



184 - 530

NOTE: Locations of Facilities are only approximate.

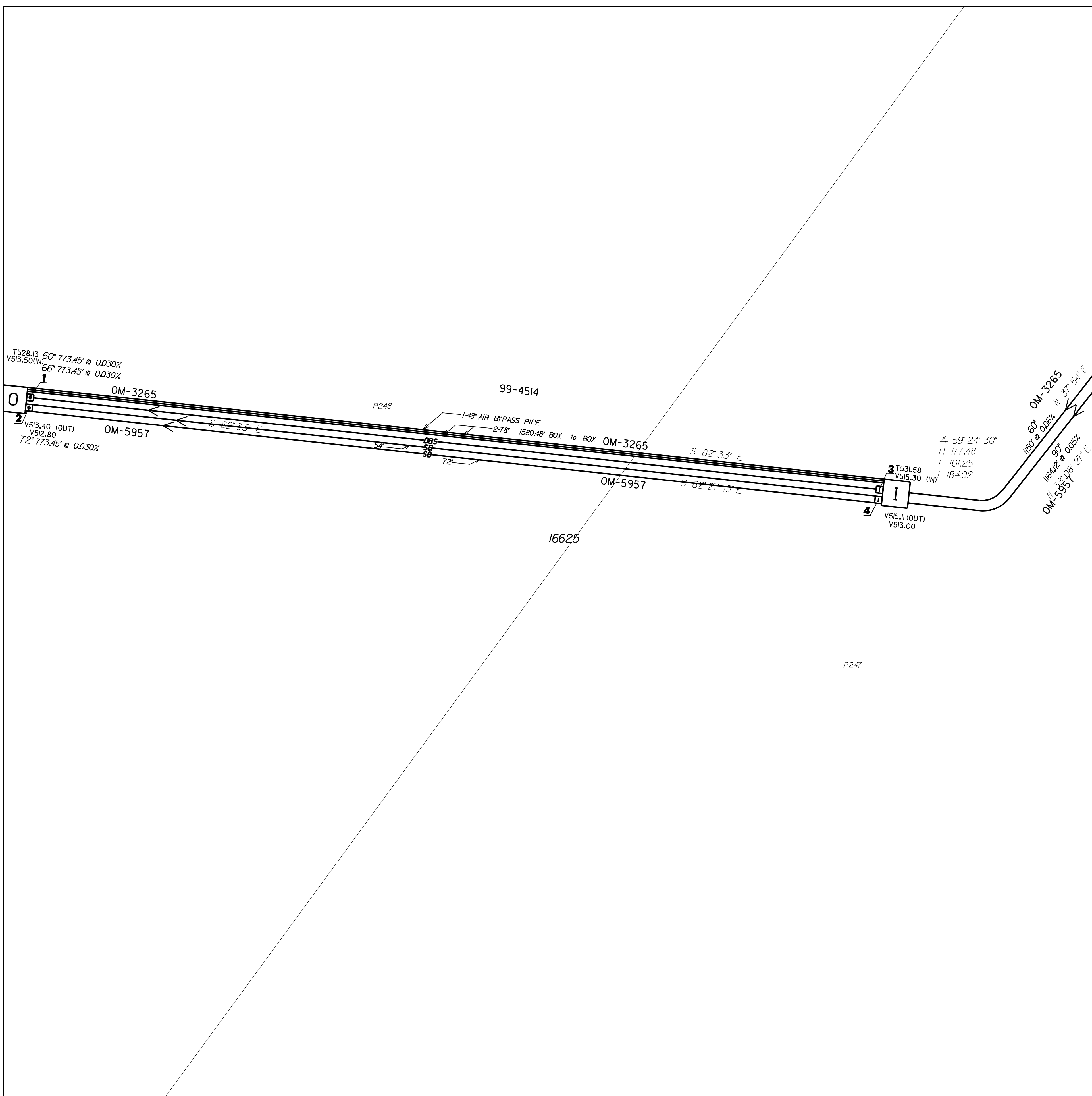
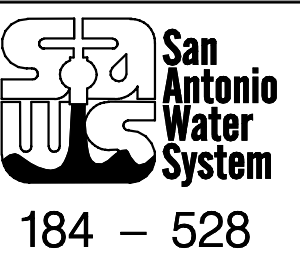
528,000
184,000

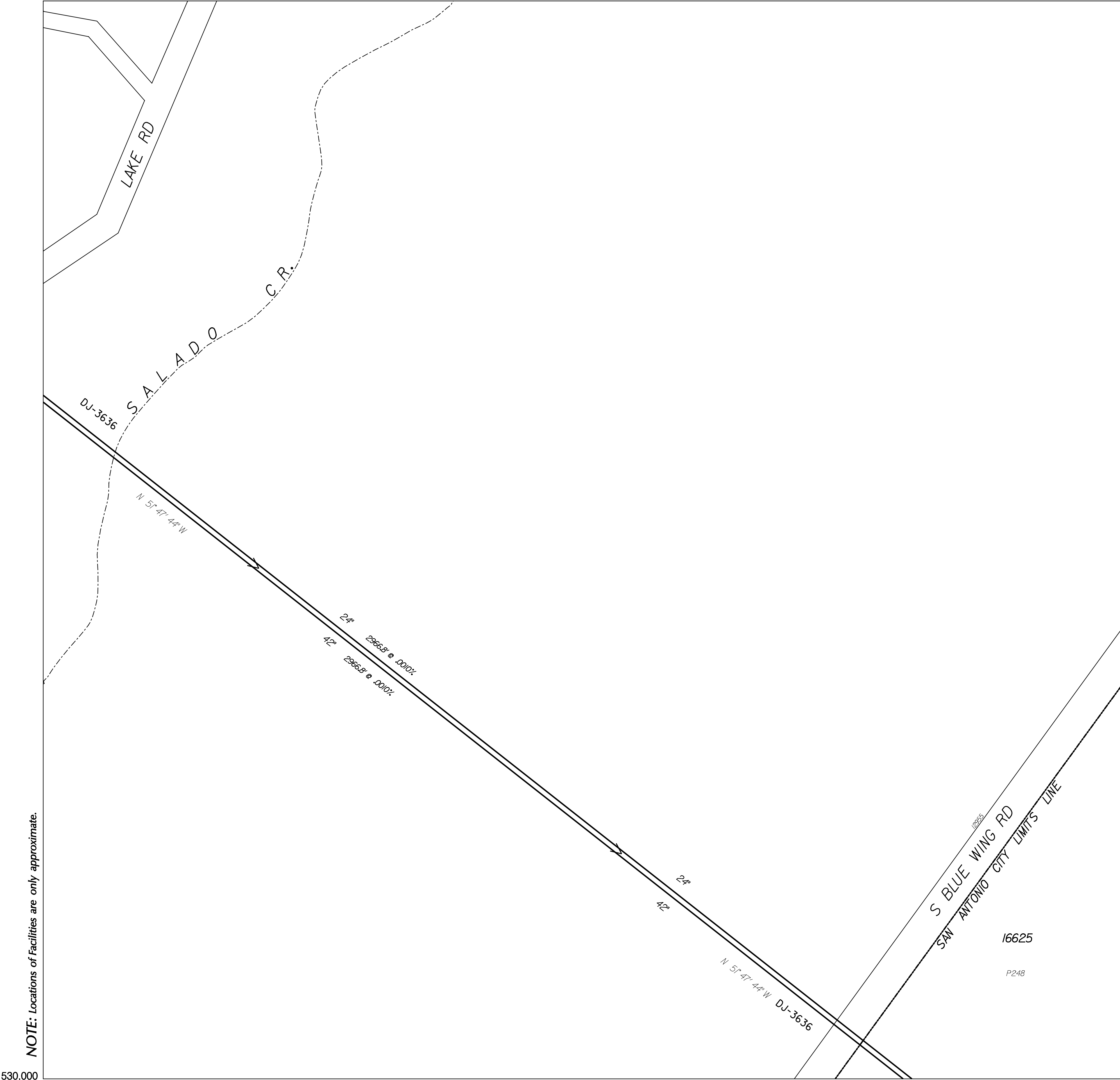


PLOTTED BY: Herman M.Garcia

SAWS UTILITY MAP DISCLAIMER
This utility map is for reference only. The information may not represent what actually has been constructed. SAWS explicitly disclaims any representation of the accuracy of the information on this map. SAWS assumes no liability for any errors, omissions, or inaccuracies in the map regardless of how caused. Field verification should be done as necessary.

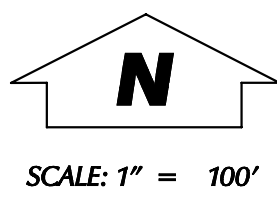
SAN ANTONIO WATER SYSTEM
INFRASTRUCTURE PLANNING DEPARTMENT
GIS MAPPING DIVISION
6 - JUNE - 2005





NOTE: Locations of Facilities are only approximate.

530,000
182,000



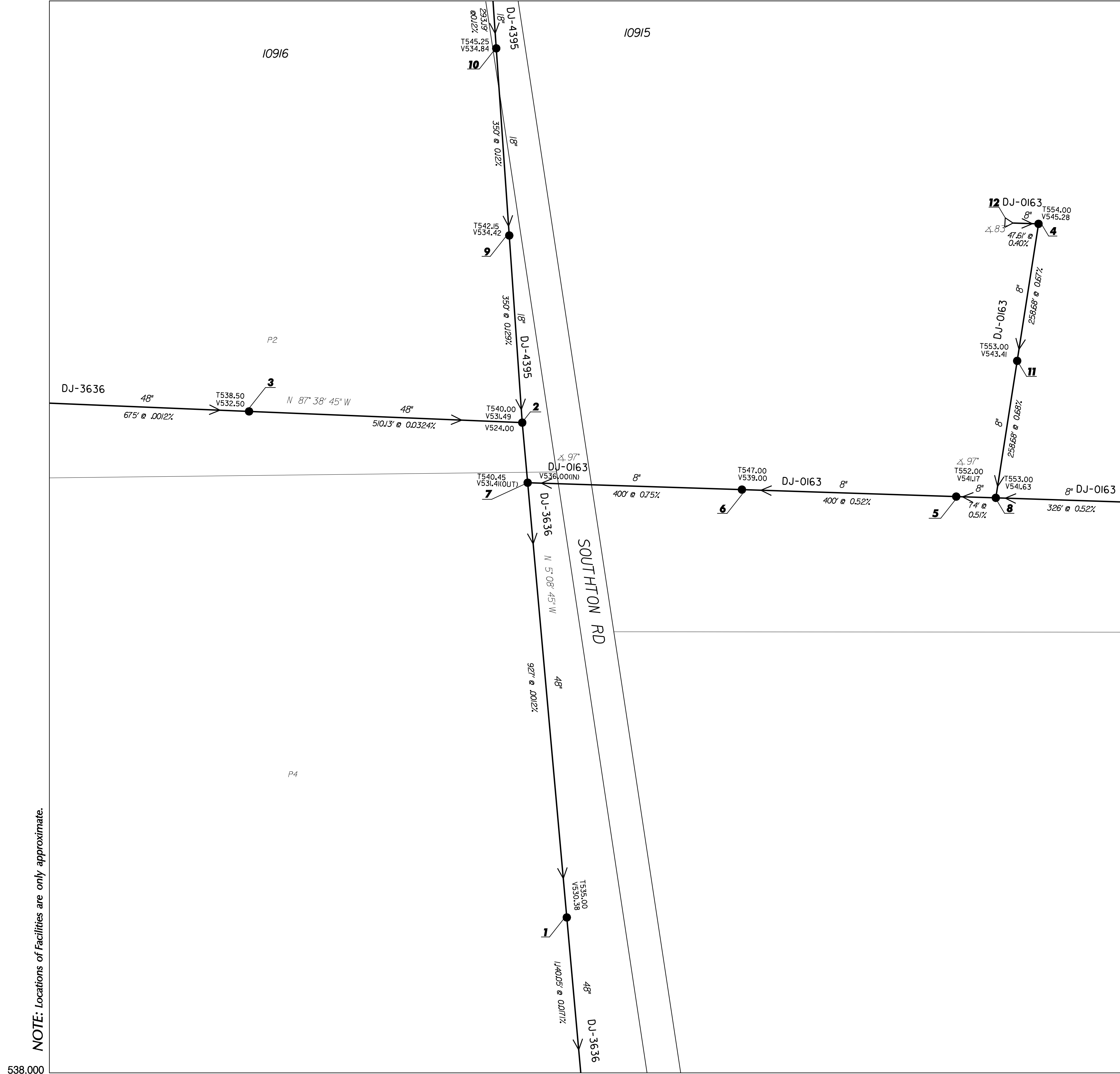
PLOTTED BY: Ernest J. Zavala

SAWS UTILITY MAP DISCLAIMER
 This utility map is for reference only. The information may not represent what actually has been constructed. SAWS explicitly disclaims any representation of the accuracy of the information on this map. SAWS assumes no liability for any errors, omissions, or inaccuracies in the map regardless of how caused. Field verification should be done as necessary.

SAN ANTONIO WATER SYSTEM
 INFRASTRUCTURE PLANNING DEPARTMENT
 GIS MAPPING DIVISION
 26 - SEPT - 2005

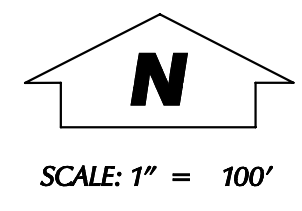


182 - 530



NOTE: Locations of Facilities are only approximate.

538,000
180,000



PLOTTED BY: Ernest J. Zavala

SAWS UTILITY MAP DISCLAIMER
 This utility map is for reference only. The information may not represent what actually has been constructed. SAWS explicitly disclaims any representation of the accuracy of the information on this map. SAWS assumes no liability for any errors, omissions, or inaccuracies in the map regardless of how caused. Field verification should be done as necessary.

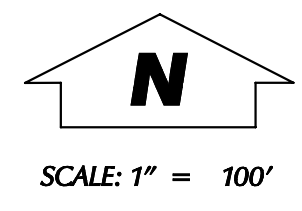
SAN ANTONIO WATER SYSTEM
 INFRASTRUCTURE PLANNING DEPARTMENT
 GIS MAPPING DIVISION
 26 - SEPT - 2005





NOTE: Locations of Facilities are only approximate.

536,000
180,000



PLOTTED BY: Ernest J. Zavala

SAWS UTILITY MAP DISCLAIMER
 This utility map is for reference only. The information may not represent what actually has been constructed. SAWS explicitly disclaims any representation of the accuracy of the information on this map. SAWS assumes no liability for any errors, omissions, or inaccuracies in the map regardless of how caused. Field verification should be done as necessary.

SAN ANTONIO WATER SYSTEM
 INFRASTRUCTURE PLANNING DEPARTMENT
 GIS MAPPING DIVISION
 26 - SEPT - 2005

